

POTATO TECHNOLOGY
SUGAR BEET TECHNOLOGY
VEGETABLE TECHNOLOGY

GRIMME
HARVESTING SUCCESS!

SV 260/275

2-row, laterally trailed potato harvester with large bunker and high separating performance in all soils



Gentle and effective in all soils: SV 260/275

The new bunker harvester from Grimme for highest acreage performance and reduced soil compaction. The approved

design with flat rising main webs which are gentle on the product is available in modular combination with the variety of

separator assemblies from the Grimme harvesting range: A new, strong range for your harvest!



Table of contents

Intake	4
Sifting aids	5
Separators	6 – 7
Sorting and picking	8
Bunker	9
Tyres and soil protection	10
Machine control and digital technology	10 – 11
Technical data	12



INTAKE



INTAKE

Gentle harvesting from the word go

For an even more accurate guidance, the pulled, 2-row intake was completely revised. Ample dimensioned, spring mounted disc coulters (1) and 2 haulm feed-in wheels facilitate trouble-free digging at intake widths of 540, 580 and 620 mm.

An automatic ridge centring device (2) supports you with the accurate row guidance of the machine.



A lot of earth in the main web channel may lead to a compaction of the ridges by the diablo rollers. Grimme therefore optionally offers a hydraulic ridge relief (3).

Machines which are used for the windrowing method (2 + 2) can be converted to "half" diablo rollers (4). This prevents the collar from damaging any potatoes.



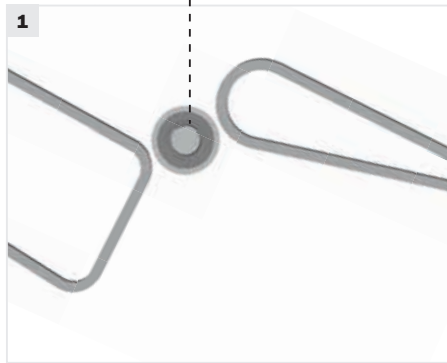
Increased harvest. Gentler handling of the ridge. More convenience. With the excellent TERRA-CONTROL (5), approved technology which ensures a continuously low diablo pressure is available to you. At the same time, the digging depth remains at a constant level – at any time and with any soil contour.

DLG-award winning:
Automatic depth guidance
TERRA-CONTROL



SIFTING AIDS

For efficient sifting of soil under the most difficult conditions

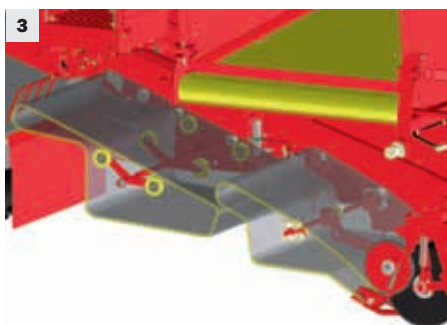


Even when the going gets really "tough", Grimme main web concepts always offer the highest sifting performance and a gentle, flat transport.

For haulm separation, an extracting roller is as a standard build in between the 1st and 2nd main web (1).

Patent

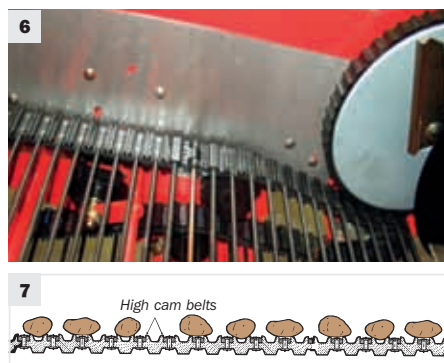
Optional: Instead of the extracting roller, the SV 260/275 can also be equipped with the patented extraction unit (2), for haulm separation that is even more gentle on the product.



On very tough soils, sifting can be assisted by an additional intake web (3) with eccentric agitator.

NEW

The extended design results in an even larger screen surface. In addition, this type of construction also makes it possible to install a swinging agitator in the 1st main web (4) when an intake web is used.



The intake width of 1,500 mm or 1,700 mm width (Option) (5)

High-quality, optionally available stainless steel sheets (6) ensure a gentle, safe soil flow without soil sticking to the main web channel.

Main webs that really pamper your harvested produce: already for years, patented high cam belts (7) have been our high level standard!



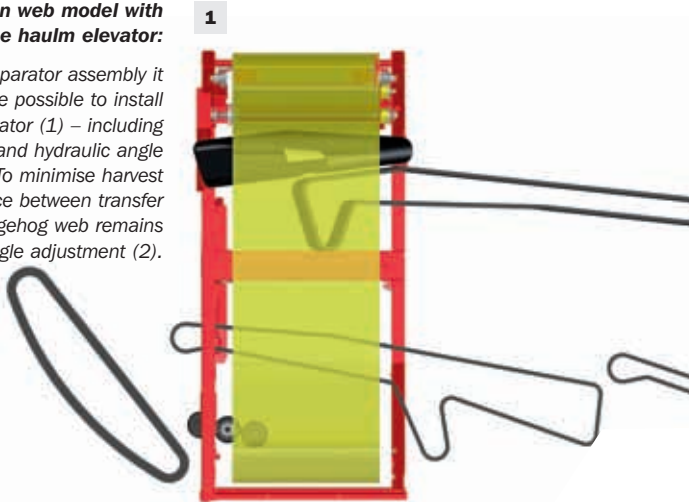


SEPARATORS

Here you will definitely find the right model for you: The SV 260/275 in 3 different models

Main web model with fine haulm elevator:

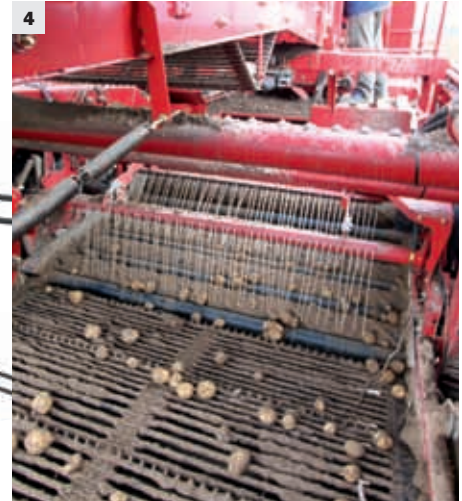
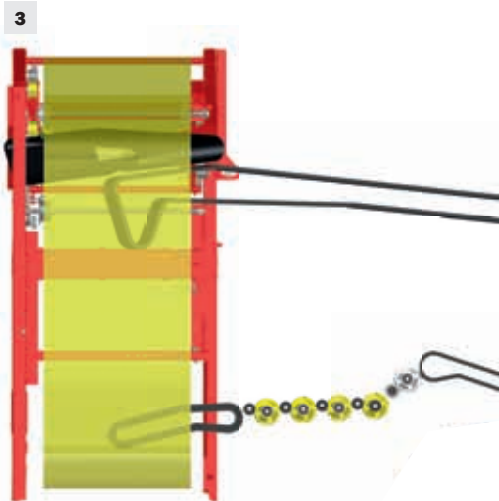
Instead of a separator assembly it is for instance possible to install a fine haulm elevator (1) – including mechanical drive and hydraulic angle adjustment. To minimise harvest losses, the distance between transfer web and hedgehog web remains constant during angle adjustment (2).



Patent

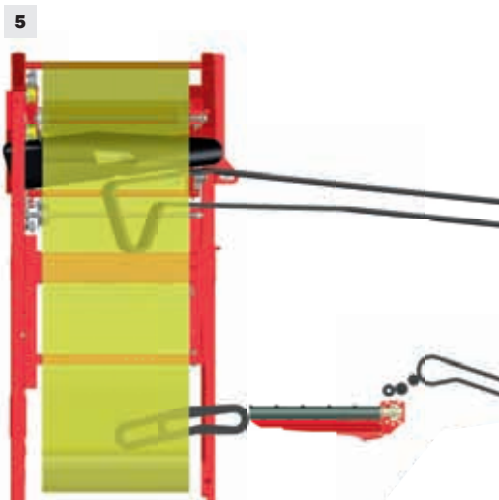
MultiSep separator model:
Grimme Innovation

Even on cloddy, sticky soils and soils containing small stones, the Grimme MULTISEP separator (3) facilitates a low-loss and effective trash separation: 4 roller pairs, consisting of a PU spiral segment roller and a rubber covered flat roller make a clean sweep (4). For very small or loose-skinned potatoes and for the use with vegetables, steel rollers are also available.



Roller separator (RS) model:

Even extremely tough, sticky soils and adverse digging conditions do not present a problem for the roller separator (5). With the patented VARIO RS (6) and the hydraulic speed, inclination and distance adjustment, it is possible to react to different potato variety sizes and harvesting conditions at any time (without roller change).



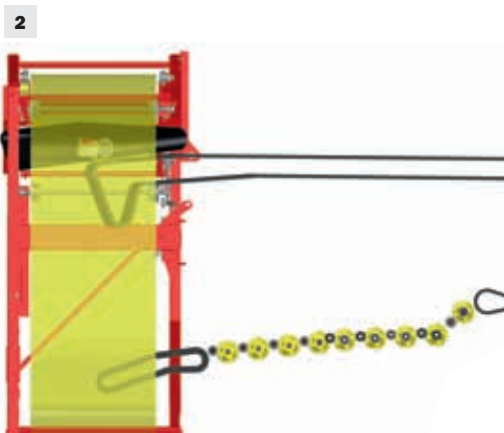
Combination options for any requirement



For an even greater separating performance, it is possible to combine the MULTISEP model (A) with a fine haulm elevator (B) and an N-separator assembly (C).



The ring elevator is optionally available with OPTIBAGS for an increased delivery capacity and additional soil loss.



Patent

MultiSep
Grimme Innovation

Double MULTISEP separator:
For an even greater separating performance during clod and haulm separation



The RS roller separator model (A) can be extended by an additional MULTISEP (B) and twin sep/bypass kit (C): Under dry digging conditions, with very loose-skinned tubers, vegetables (e.g. onions) or on very stony surfaces, the roller separator can be partly or completely bypassed. It is hydraulically driven and can be partly or completely lowered from inside the tractor cab.

Either both twin sep units are lowered (4)...

...or only the front half of the twin sep. i.e. one half of the roller separator is bypassed (5).

...or the twin sep is completely raised – no bypass (6).



SORTING AND PICKING

Conveniently harvest best hand-picked quality

Ergonomically designed workplace without sharp edges and bothersome hydraulic lines makes careful picking more convenient. Two easy pick chutes are optionally available.



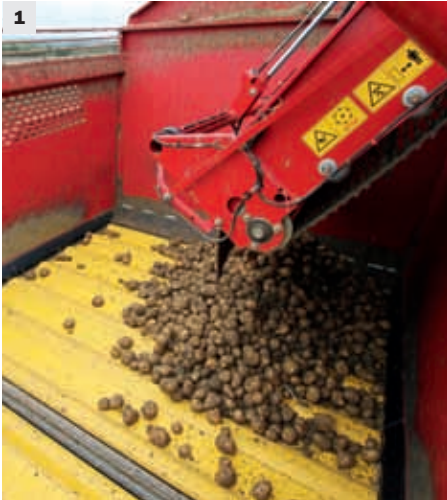
The spacious picking platform offers a convenient workplace for up to six persons. Important machine functions can be conveniently operated from the picking terminal.



BUNKER



Moving floor bunker: Large, powerful and with a lot of know-how for best harvest quality!



Final conveyor (1): Filling of the bunker starts immediately from the bunker floor. For constantly low drop steps, the filling conveyor is successively raised via the optional automatic final conveyor system. At the same time, the web is pulled forward until the bunker is completely filled.

3 bunker versions are available to choose from (2): 6 tonne bunker (standard), optionally 7.5 tonne bunker or 5.8 tonne transfer bunker.



Drop-step optimised transfer: If desired, the moving floor bunker can be equipped with an adjustable bunker head nose (3).



Transfer bunker with two separate belts for truly non-stop digging (4)



TYRES AND SOIL PROTECTION

Minimising soil pressure with broad tyres

The tyres minimise the soil pressure, contribute to the machine sinking in less, thus making it easier to pull. Select the matching tyres from our range.



600/55-26.5 (Series) 710/45-26.5 (Option) 710/50-30.5 (Option) 800/45-30.5 (Option)

MACHINE CONTROL AND DIGITAL TECHNOLOGY

Consistent operation for top results

Reacting faster: The optional CAN-Bus-controlled video monitoring system VISUAL-PROTECT facilitates an all-round function monitoring of your digging machine. If there is a problem in the machine, the screen automatically switches to the corresponding camera.

**Visual
Protect**





1



2

Convenient operation as a standard: Use the combination of VC 50 terminal and GBX terminal for intuitive operation (1).

For a perfect one-hand operation of the machine, we offer an optional joystick with freely selectable assignment of the individual keys (2).



3



4

World-wide unique: the control concept CCI (3) for ISOBUS compatible agricultural machines that spans several manufacturers has been co-developed by Grimme (Option).

Convenience at the push of a button: The optional CLEAN-CONTROL (4) facilitates the simultaneous control of selected separator assemblies, for instance to briefly turn up performance to 100 % for cleaning purposes.



5



6

For bunker unloading on the left-hand side of the machine, an additional GBX control terminal can be arranged on the left-hand driver's side, a position that makes sense from an ergonomic point of view (5).

With the control terminal GBT 817, all important picking functions can be set by the personnel at the picking web (6).



Technical data

	SV 260 with fine haulm elevator	SV 260 with MULTISEP separator or RS roller separator
Length	Machine in transport position with standard tyres and without special equipment	Machine in transport position with standard tyres and without special equipment
Width	11,260 mm	11,100 mm
Height	3,150 mm	3,150 mm
Weight	3,700 mm	3,700 mm
Weight	11,850 kg (machine in empty condition without special equipment)	11,900 kg (machine empty without special equipment)

	Basic Equipment	Option
Hitching mechanism	Towing eyes 40 or 50 mm, clevis/hitch	Hydraulic drawbar steering, drawbar ball coupling with 80 mm diameter
Intake	2 cutaway discs, 2- or 3-part intake width 540, 580 or 620 mm row width 750 mm	Adjustable row width up to 900 mm at 1,700 mm Main web channel, stone protection, windrow intake, bed digging unit, TERRA-CONTROL, hydraulic ridge relief
Intake web	Sifting area 2.3 m ²	Mechanical drive Hydraulic drive Pitch optionally 28, 32, 35, 40, 45 or 50 mm
1st main web	1,500 mm wide Sifting area 5.1 m ² Pitch optionally 28, 32, 35, 40, 45 or 50 mm Mechanical rotor agitator height adjustable, pitch-independent rubber friction drive	Rubber covered rods 1,700 mm wide Sifting area 2.8 m ² at intake web Additional swinging agitator Hydraulic height adjustment of the rotor agitator
1st extraction unit	Extracting roller against 1 st main web	Extraction unit, segment shaft with twin rubber rollers
2nd main web	1,700 mm wide, sifting area 3.2 m ² Pitch optionally 28, 32, 35, 40, 45 or 50 mm	Rubber covered rods
2nd extraction unit	Extracting roller against 2 nd main web	Extraction unit, segment shaft twin rubber rollers
3rd main web	1,700 mm wide, sifting area 3.5 m ²	At fine haulm elevator
Separators	MULTISEP separator or RS roller separator or fine haulm elevator	Double MULTISEP separator or RS roller separator with MULTISEP separator, Twin Sep/Bypass Kit for RS roller separator, Vario roller separator, fine haulm elevator, N-separator assembly
Ring elevator	900 mm wide, fabric	OPTIBAGS
Picking table	With warning system, 1,100 mm wide, picking platform for min. 2 x 3 persons, hydraulic drive of the picking belt	
Bunker	Outlet height: 4,200 mm, capacity: 6,000 kg, 2-steps for drive, adjustable in an infinitely variable manner	Capacity: 6,300 kg incl. filling optimisation, potato hopper with drop height reducer, hydraulic folding device for potato hopper with drop height reducer, automatic filling system, 7.5 tonne bunker (machine width 3,300 mm), 5.8 tonne bunker with direct transfer (machine width 3,300 mm), adjustable bunker head nose, BIG BAG with potato hopper with drop height reducer, automatic final conveyor
Axle	Hydraulic steering axle Levelling	Axle centre detection Hydrostatic wheel drive Automatic levelling
Tyres	600/55-26.5 left 710/45-26.5 right	710/50-30.5 left 800/45-30.5 right
Machine control system	CAN-Bus electronic system with diagnosis option	
Power consumption	Tractor from 90 kW (Values are applicable for use under normal operating conditions. Values can be higher in case of unfavourable operating conditions.)	

Your Grimme Partner for advice and service:

No claims can be raised in respect of texts, illustrations, technical specifications, dimensions and weights, equipment as well as performance specifications. They are approximate and non-binding. Changes in the course of technical enhancement are possible at any time.

GRIMME
HARVESTING SUCCESS!